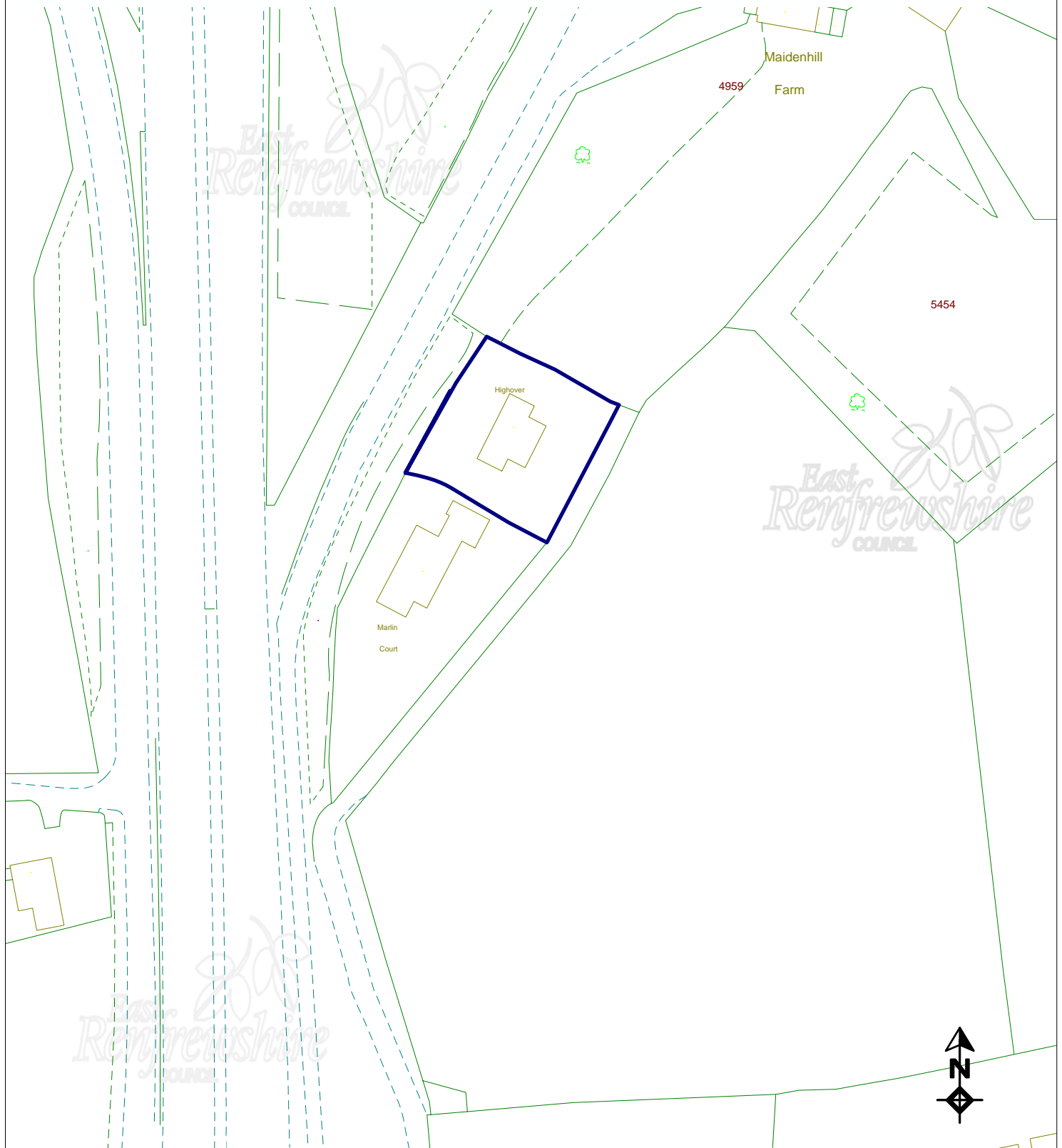


'This copy has been made by or with the authority of Joe Devine, Head of Roads Planning and Transportation, pursuant to section 47 of the Copyright, Designs and Patents Act 1988 ('the Act'). Unless the act provides a relevant exception to copyright, the copy must not be copied without the prior written permission of the copyright owner.'



REFERENCE:- 2008/0513/TP

LOCATION:- Highover, 353 Ayr Road Newton Mearns



MAP REFERENCE: NS5254SW

DATE: 31/07/2008

SCALE 1:1250

Reproduced from the Ordnance Survey Mapping with the permission of the Controller of Her Majesty's Stationery Office (C) Crown Copyright. Unauthorised reproduction infringes Crown Copyright and may lead to prosecution or civil proceedings. East Renfrewshire Council, OS License No. 100023382 2008.