

3.0 | Population - In more detail

East Renfrewshire is situated to the south of the City of Glasgow. It covers an area of 67 sq miles (174 sq km). The north of the area comprises the urban areas of Giffnock, Newton Mearns, Clarkston, Thornliebank and Barrhead. Each of these settlements has a distinctive character. There is also an extensive rural hinterland to the South, within which, the villages of Uplawmoor, Neilston, Waterfoot and Eaglesham area are located. Approximately 15 per cent of the area is urban and 85 per cent rural. The Levern Valley area includes the settlements of Barrhead, Neilston and Uplawmoor. The Eastwood area includes Busby, Clarkston and Williamwood, Eaglesham and Waterfoot, Giffnock, Netherlee and Stamperland, Newton Mearns and Thornliebank.

The population of East Renfrewshire increased by 4.4 per cent to 93,810 from 2001-2016. The highest proportion of the East Renfrewshire population live in the Eastwood area (74 per cent).

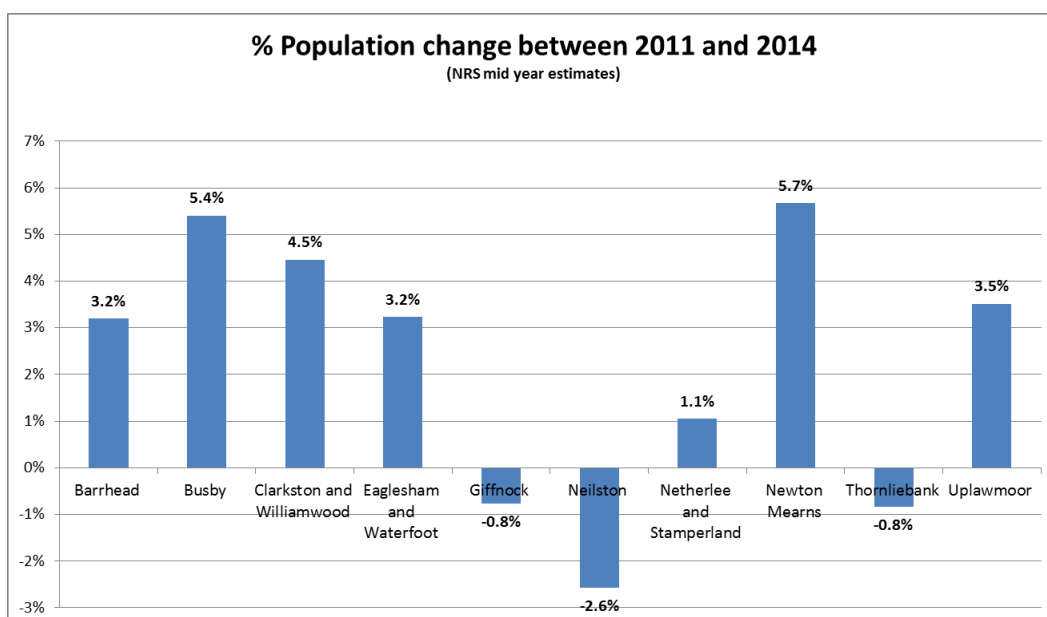
Most of this population growth has been concentrated in Newton Mearns (5.7 per cent), Busby (5.4 per cent), Clarkston and Williamwood (4.5 per cent), Uplawmoor (3.5 per cent), Eaglesham and Waterfoot (3.2 per cent), Barrhead (3.2 per cent) and Netherlee and Stamperland (1.1 per cent). Population declined in Neilston, Giffnock and Thornliebank.

Table 1

Population by community	2011	2014	2016*
Barrhead	17268	17820	
Busby	3717	3917	
Clarkston and Williamwood	8839	9234	
Eaglesham and Waterfoot	4620	4769	
Giffnock	12200	12106	
Neilston	5583	5440	
Netherlee and Stamperland	8079	8164	
Newton Mearns	24495	25884	
Thornliebank	4193	4158	
Uplawmoor	857	887	
Total	89850	92380	93810

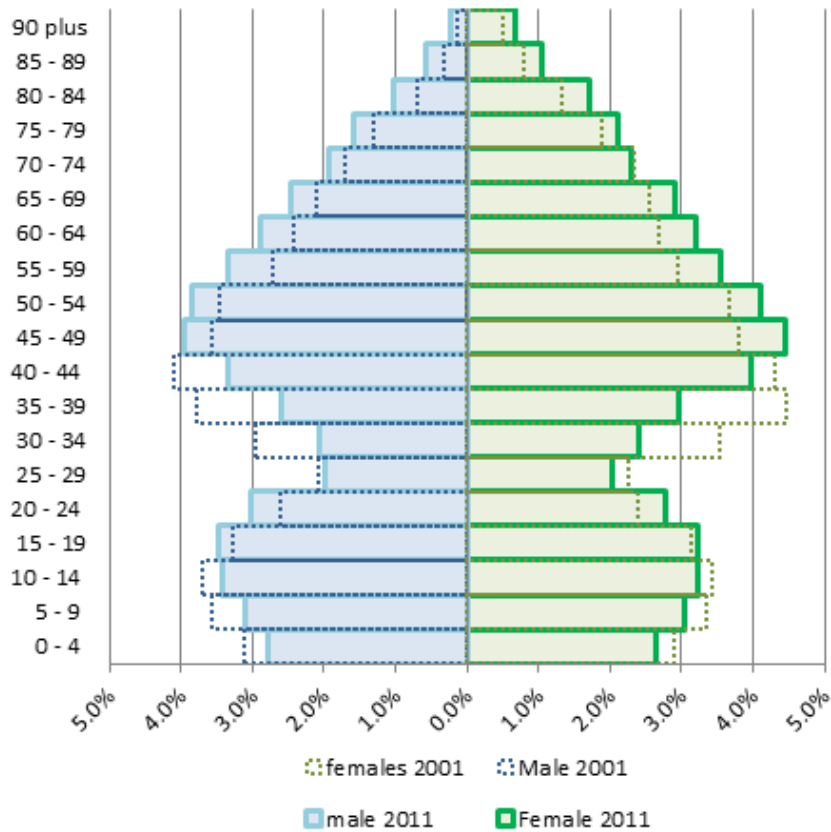
Source: NRS 2011 mid year estimates and NRS 2014 mid year estimates published June 2015. *NRS 2016 mid year estimate at council area level only.

Graph 1. Population change by community 2011-2014, All ages



Source: NRS Census 2001 and NRS 2014 mid year estimate

Graph 4. Population by Age

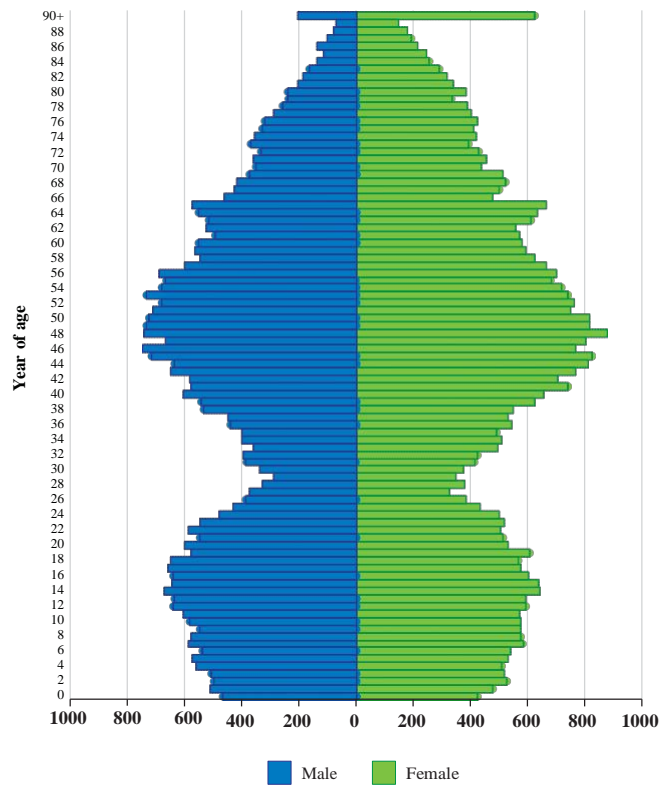


Source: NRS Census 2001 and 2011

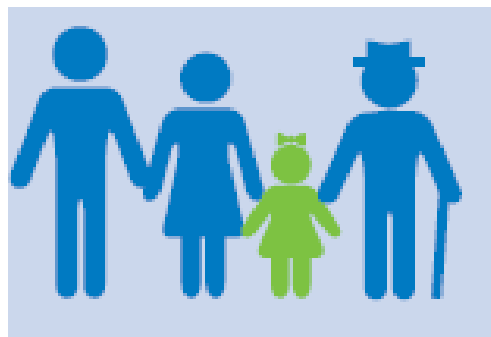
In line with national trends, the age profile of the population has become older over 10 years from 2001 to 2011. Between this period, there was a decrease in the proportion aged under 15 from 20 per cent to 18 per cent and an increase in the population aged 65 and over from 16 per cent to 18 per cent. The proportion of working age (16-64) people living in East Renfrewshire stayed the same at 64 per cent. However more recent estimates show that the proportion of under 15's is increasing in East Renfrewshire due to migration.

¹⁸ NRS Census estimates 2001 and 2011 by age group (release 1C)

Graph 5. 2011 Population by Single Year of Age (NRS Census)



In 1911, the national population structure was a perfect pyramid but 100 years on the populations in different age groups are much more evenly mixed with a wide belt being seen to move upward with age. Whilst the geographical spread of population growth has been uneven across East Renfrewshire localities, the age- distribution of change since 2001 also reveals particular concentrations. The rate of change in age specific population groups between Scotland and East Renfrewshire was most pronounced among 15 – 64 year olds and the 65 and older population. The decrease in under 15s and a stable 15 – 64 population size in East Renfrewshire is coupled with sizeable increase in the 65+ population. This highlights the changing age structure within the local authority¹⁹.



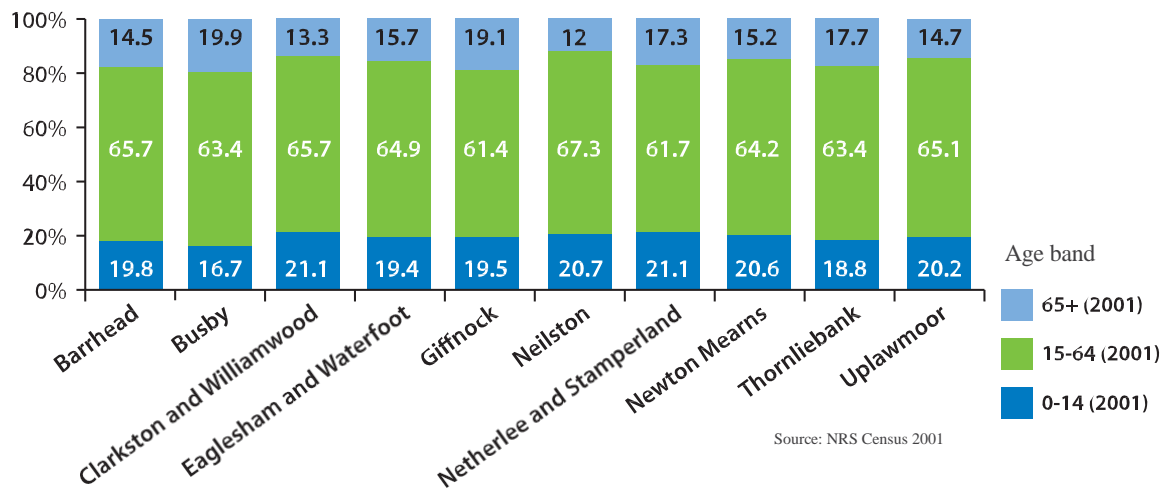
¹⁹NRS Census 2011 population by single year of age (release 1C)

Over a decade

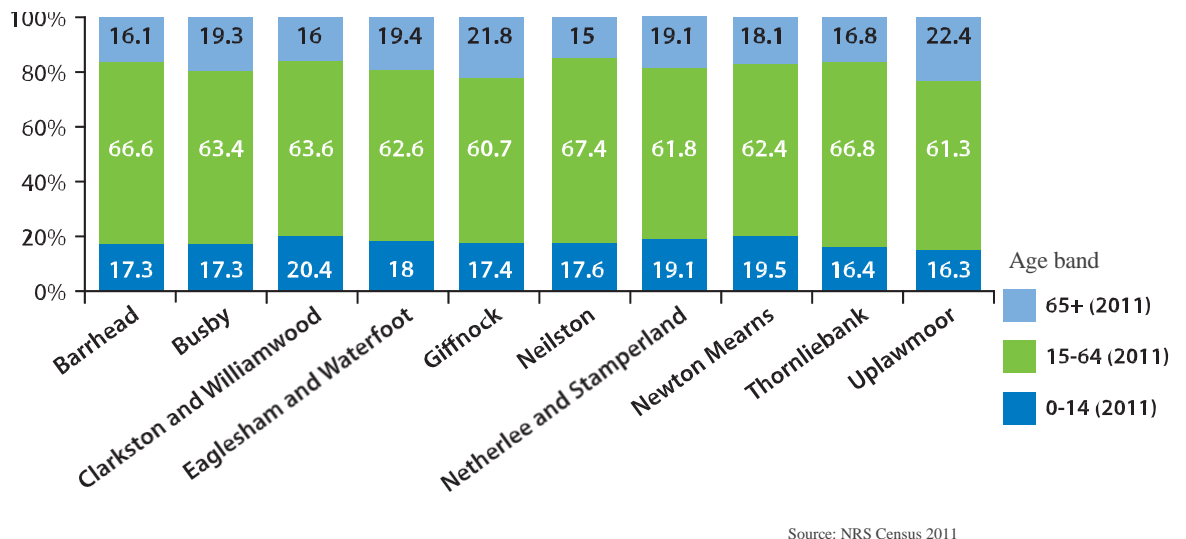
Between 2001 and 2011 (between Censuses) there was a decrease in younger people and an increase in older people and this pattern reflects that of East Renfrewshire and Scotland. However the increase in the percentages of 65s and over in Clarkston and Williamwood, Newton Mearns, Giffnock, Eaglesham and Waterfoot, Neilston and Uplawmoor is higher than the Council wide figure of 2.3 per cent. Busby was the only area to experience a slight increase in the proportion of their population aged under 15. However recent mid year estimates (between 2011 and 2014) show increases in the proportion of young people and children across various communities of East Renfrewshire (see page 25).

The percentage of working age people has stayed at a similar level in most areas with the exception of Thornliebank and Barrhead where it has risen slightly and Eaglesham, Waterfoot and Uplawmoor where numbers have reduced.

Graph 6. 2001 Census age band by community

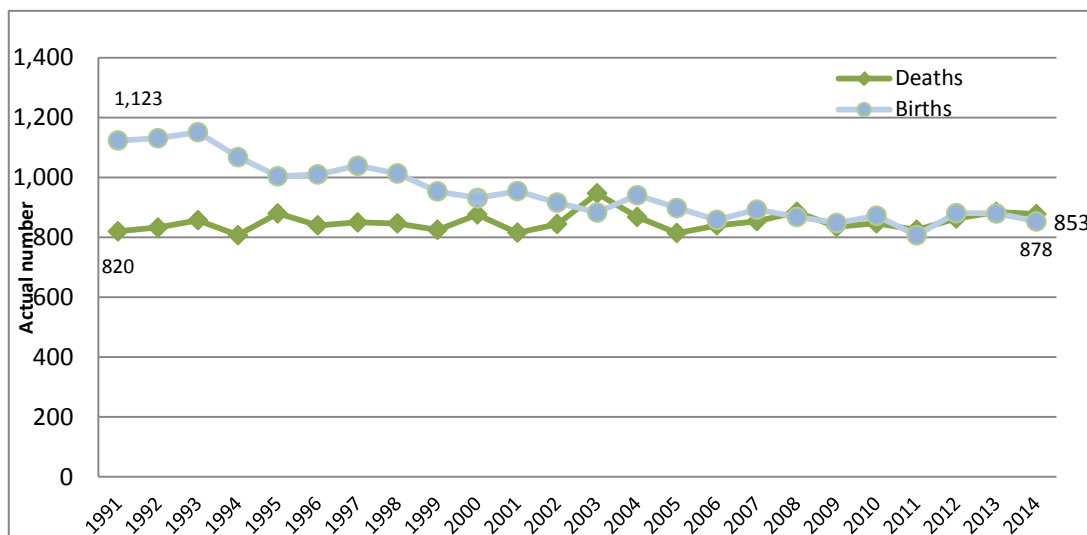


Graph 7. 2011 Census age band by community



3.3 | Births and Deaths in East Renfrewshire

Graph 8. Births and deaths in East Renfrewshire



The birth rate has declined quite significantly over the past 20 years moving from 13 per 1,000 population in 1991 to 9.2 per 1,000 population in 2014²⁰. Between 2013 and 2014 East Renfrewshire experienced a 3.1 per cent decrease in the number of births, dropping from 880 in 2013 to 853 in 2014. The number of births in Scotland rose by 1.3 per cent.

Overall the death rate has stayed stable starting at 9.6 per 1,000 population in 1991 and moving to 9.5 per 1,000 population in 2014.²¹

The birth rate in Scotland has fallen to the lowest level since records began almost 150 years ago. Scotland’s population had fallen by 2% in the last 20 years. Death rate stayed stable with East Renfrewshire’s life expectancy levels being the second highest in Scotland behind East Dunbartonshire.

²⁰ NRS fertility rates and death rates (vital events reference tables) 2013 <http://www.nvscotland.gov.uk/statistics-and-data>

²¹ NRS fertility rates and death rates (vital events reference tables) 2013 <http://www.nvscotland.gov.uk/statistics-and-data>